

# UPGRADE OPTIONS



## KITCHEN

- Raised/Inset panel cabinets
- Caesarstone® counters
- Thermador®, Sub-Zero®, or Wolf® appliances
- Glass wall cabinet doors and tile backsplash
- Wire cable supported island pendant fixtures
- Roll out trays in base cabinets
- 2-piece crown molding on wall cabinets

## BATHROOM

- Marble shower/tub surround, floor tile, and baseboard
- Satin nickel light fixture, plumbing fixture, and door hardware finish
- Rain style shower head
- Raised panel or inset raised panel vanity cabinets

## POWDER ROOM

- Satin nickel light fixture, mirror, plumbing fixture, and door hardware finish

## LIVING ROOM

- Ataja Cream marble honed surround and hearth

## FLOORING

- 2 1/4" x 3/4" clear maple
- 3 1/4" x 3/4" clear maple
- 3 1/4" x 3/4" cherry
- Stain on any wood floor (4 color options)

## LOWER LEVEL

- Wet bar (only)
- Exterior door from bedroom
- Finished storage room

## GENERAL

- Storm door
- Bookshelves
- Crown molding
- Door to deck from 1st floor bedroom

## EXTERIOR

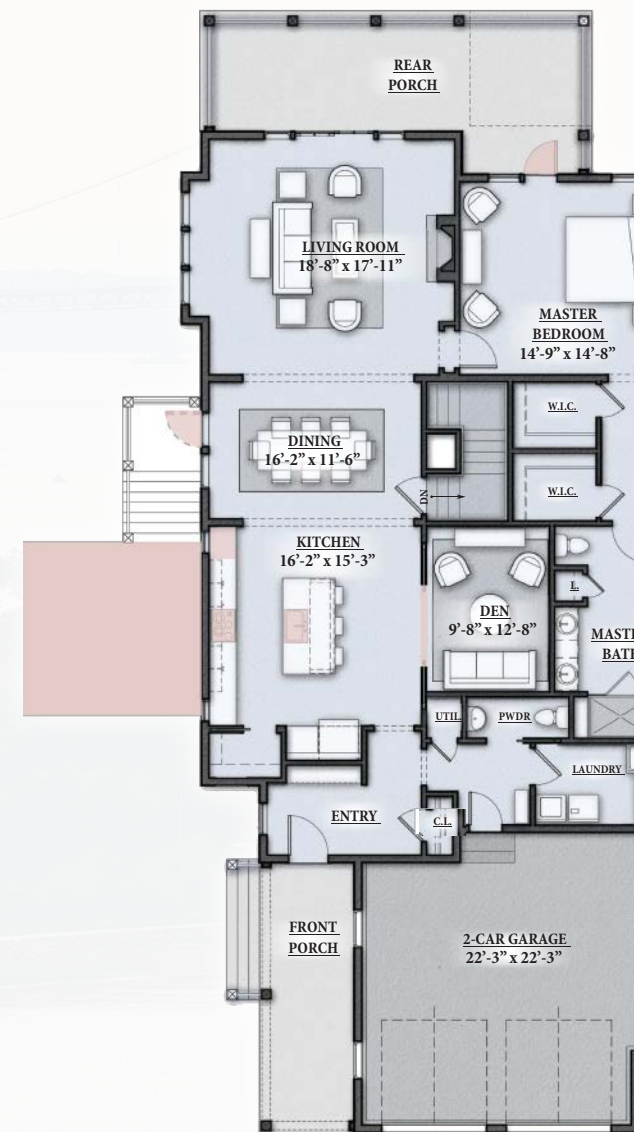
- Side patio with stairs and exterior door to dining room
- Lower level patio
- Stone wall at either patio
- Gas line for exterior grill at side patio

# VILLAGES

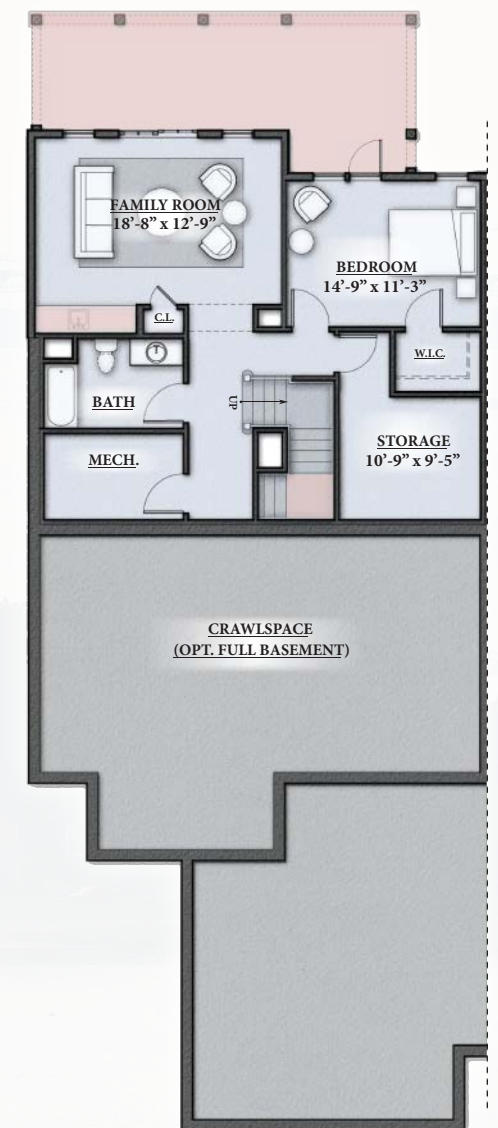
on Mount Hope Bay

## THE WESTERLY

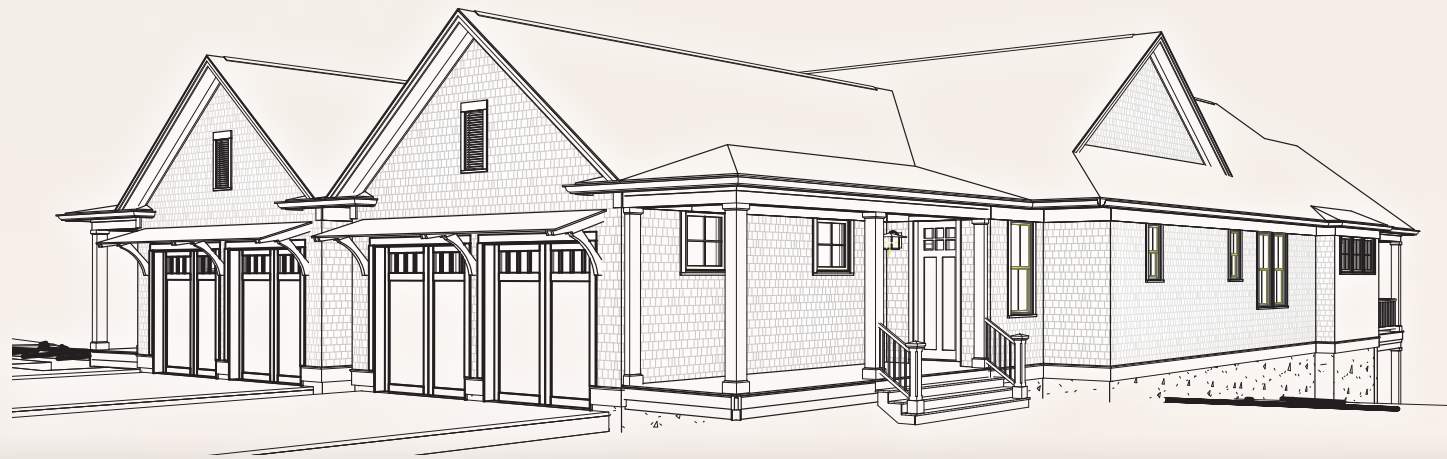
### MAIN LEVEL



### LOWER LEVEL



■ - Upgrade Options Listed on Back



## STANDARD SPECIFICATIONS

### LIVING ROOM FEATURES

- 2 1/4" x 3/4" polyurethane coated red oak hardwood flooring
- Built-in, direct-vent fireplace with remote control, honed Absolute Black granite surround and hearth
- Recessed light fixtures, with capped junction box and wall switch/dimmer for future pendant fixture or ceiling fan
- Exterior sliding glass door with transom window to elevated deck, overlooking Mount Hope Bay
- Floor to ceiling sidelight windows on both sides of sliding door

### KITCHEN FEATURES

- 2 1/4" x 3/4" polyurethane coated red oak hardwood flooring
- Walk-in pantry with adjustable shelving
- Recessed light fixtures and decorative island pendant light fixtures
- Shaker style, quality constructed kitchen cabinets, in multiple finish options with slow-close drawers, trash receptacle and deep pots/pans drawer
- Diverse selection of granite counter material with a 4" backsplash
- Under cabinet LED strip fixtures
- Lighted exhaust hood vented to the exterior
- GE™ Stainless Steel appliances including refrigerator with water dispenser and ice maker, dishwasher, microwave, disposal, natural gas cooktop and electric wall oven
- Single piece crown molding on wall cabinets

### DINING AREA FEATURES

- 2 1/4" x 3/4" polyurethane coated red oak hardwood flooring
- Recessed mini LED light fixtures, with capped junction box and wall switch/dimmer for future pendant fixture or ceiling fan

### ENTRY HALL FEATURES

- 2 1/4" x 3/4" polyurethane coated red oak hardwood flooring
- Built-in bench seat
- Coat closet with door jamb controlled light switch
- 8' entry door with oil rubbed bronze thumb-latch entry set
- Decorative stemmed light fixture

### MAIN LEVEL BEDROOM SUITE FEATURES

- Contemporary carpeting with choice of several shade variances
- Adjoining bathroom and walk-in closets
- Oversized windows overlooking Mount Hope Bay
- Luxuriously appointed ensuite bathroom
  - 13" x 20" Porcelain tile
  - Dual under-mount white porcelain sinks
  - 1" x 1" mosaic marble shower floor
  - Tiled shampoo niche
  - Marble vanity counter and shower seat
  - Frameless glass shower door with sidelight
  - Full width mirror over vanity
  - Polished chrome fixtures and door hardware
  - Decorative wall sconces
  - Recessed light/exhaust fan combo fixture over shower and toilet
  - Porcelain subway tile shower surround
  - Linen closet
  - Recessed light fixtures

### DEN FEATURES

- 2 1/4" x 3/4" polyurethane coated red oak hardwood flooring
- Recessed light fixtures
- Double privacy pocket doors

### POWDER ROOM (MAIN LEVEL 1/2 BATH)

- 2 1/4" x 3/4" polyurethane coated red oak hardwood flooring
- Pedestal sink
- Decorative wall mirror
- Polished chrome hardware and decorative wall sconces
- Recessed light/exhaust fan combo fixture

### LAUNDRY ROOM FEATURES

- Sink base with tapered granite counter extension
- Wall cabinets
- Under-mount sink with pull out spray
- Porcelain tile floor with painted wood baseboard
- Recessed light fixtures
- Hook-ups for washing machine and electric clothes dryer

### LOWER LEVEL BEDROOM FEATURES

- Windows facing Mount Hope Bay
- Walk in closet
- Attractive wall-to-wall, contemporary carpeting with choice of several shade variations

### LOWER LEVEL BATHROOM FEATURES

- 12" x 24" Porcelain floor tiles and baseboard
- Porcelain subway tile tub surround
- Marble vanity counter
- Full width mirror over sink
- Polished chrome fixtures and door hardware
- Decorative wall sconces and recessed light fixtures
- Recessed light/exhaust fan fixture

### LOWER LEVEL FAMILY ROOM FEATURES

- Exterior sliding glass door and flanking windows facing Mount Hope Bay
- Recessed light fixtures, with capped junction box and wall switch/dimmer for future pendant fixture or ceiling fan
- Contemporary carpeting with choice of several shade variations

### LOWER LEVEL UNFINISHED STORAGE

- Utility lighting
- Concrete slab
- Exposed framing

### INTERIOR FEATURES

- Blueboard with skim coat plaster, painted with a selection of base design colors
- Predominant 9' ceiling height @ main level
- Smooth plaster finish on all interior finished spaces
- Two-panel molded doors with combination of brushed and polished chrome hardware
- Combination of hardwood flooring, porcelain tile, and carpet
- Carpeted lower level hall
- Painted 3 1/2" casings throughout unit
- Painted 5 1/4" base board throughout unit

### EXTERIOR FEATURES

- Opaque stained, white cedar shingle siding, twice dipped
- Clad, wood windows and patio doors
- Composite decking, railing system, and exterior trim
- 30 year architectural roof shingles and aluminum gutters

### CONSTRUCTION FEATURES

- Single Story wood framed structure
- Energy code compliant building envelope
- Fire-rated double stud demising wall construction between adjoining units
- Two car garage with individual garage doors and openers, direct access from garage to interior
- Exterior main floor deck overlooking bay, accessible from living room

### MECHANICAL FEATURES

- Toto bathroom plumbing fixtures throughout
- Central heat and air conditioning
- Energy Star water heater
- Blanco kitchen and laundry room sinks
- Grohe® kitchen faucet

### ELECTRICAL FEATURES

- 200 amp service provided to each home
- All homes prewired for telephone, data and cable TV
- Hard wired smoke and carbon monoxide detectors

## SEE REVERSE FOR UPGRADE OPTIONS

Information above subject to change