

VILLAGES

on Mount Hope Bay

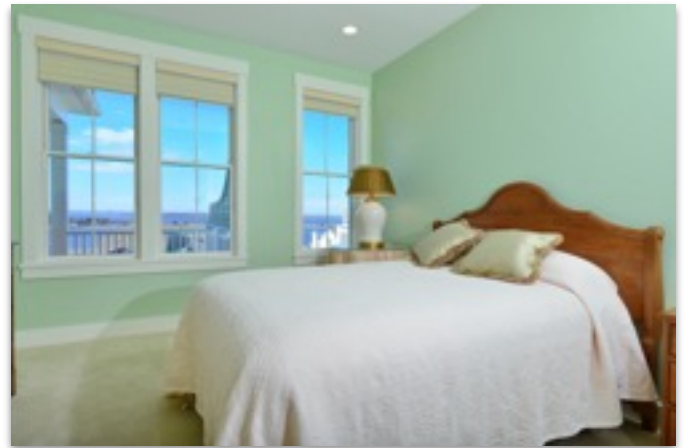
RESIDENCES: LUXURIOUS TOWNHOMES AND MIDRISE CONDOMINIUMS IN RI

15 Mainsail Drive

South Western (End) Exposure

Offered for \$720,000

2876 Square Feet plus 2000 SF in unfinished lower level (daylight walkout)



- 2 Beds, 2 1/2 baths
- Upgraded Ceasterstone Counter tops
- Marble/ Porcelain master bathrooms
- Upgraded Hardwood Floors: 2nd Floor Master Suite
- Radiant Heated Bathroom Floors (2nd floor)
- Full unfinished daylight walkout lower level
- Covered Deck
- Main Level Den
- Abundant storage
- Southern Exposure
- 2 car attached garage
- Public Water/ Sewer
- Central Air/ Gas Furnace

Price : \$720,000

Taxes: \$14,000

Condo Fee: \$830 /Month